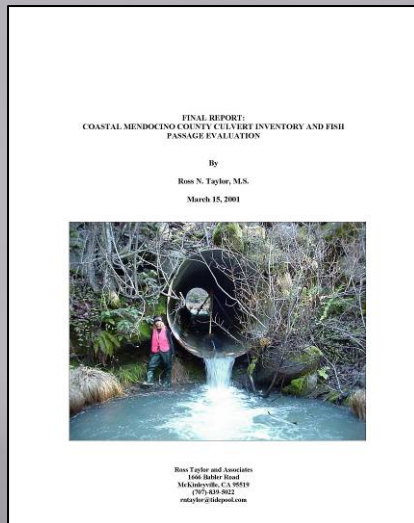


2011-12 FIVE COUNTIES WORK SUMMARY

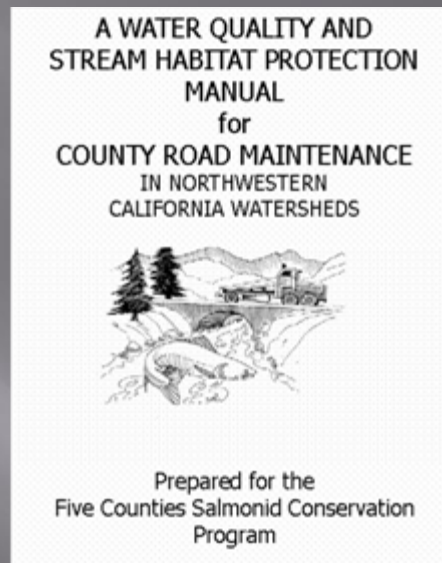




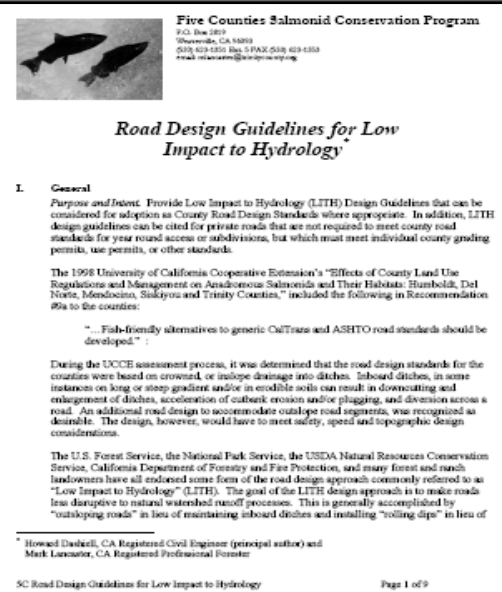
Watershed Planning Tools



Migration Barrier Inventories & Prioritization



Roads Manual



LITH Standards

FIVE COUNTIES - RANKING MATRIX OF 245 COUNTY-MAINTAINED STREAM CROSSINGS

Color Code: Green = High Priority, Yellow = Medium Priority, Orange = Low Priority, Red = Very Low Priority

Site #	Road Name	Road Number	Road Width	Surface	Mileage	Watershed	Milepost Marker	CALWAA	Maintenance Yard	Roll and Frame	Comment
3309	Rambling Road	H56	20	paved	9.876	Wolf Creek			Lakewood	4 taken	3 xing that has been culverted down left of natural OB channel & is causing severe OB erosion. Large sediment fan. Stream was channelized on the left IL hinge line to OL in unnatural area. Several 250's up right on OB contribute to erosion. Took 4 pictures of OB from 1/2 mile up road to culvert. See photo of OB from 1/2 mile up road to culvert.

General Information

Site #: 3309 Road Name: Rambling Road

Date Inventoried: 11/2/2004 Road Number: H56 Road Width: 20

Inspector(s): Christine/Carolyn Surface: paved

County: Other Mileage: 9.876

Watershed: Wolf Creek Milepost Marker:

CALWAA:

Maintenance Yard: Lakewood Roll and Frame: 4 taken

See sketch filed in:

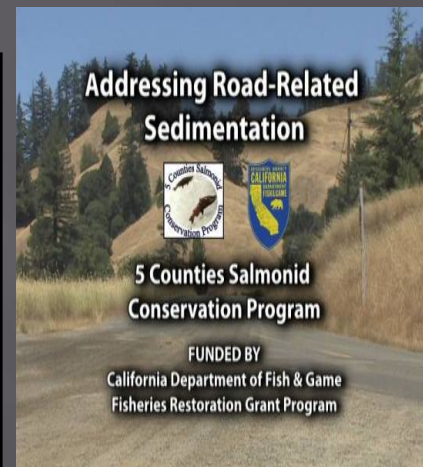
Comment: 3 xing that has been culverted down left of natural OB channel & is causing severe OB erosion. Large sediment fan. Stream was channelized on the left IL hinge line to OL in unnatural area. Several 250's up right on OB contribute to erosion. Took 4 pictures of OB from 1/2 mile up road to culvert. See photo of OB from 1/2 mile up road to culvert.

GIS Information

GPS X Coordinate: 465532 Map X Coordinate: 465542

GPS Y Coordinate: 4460773 Map Y Coordinate: 4460773

GPS EPE: 34 GPS DOP: 2.7



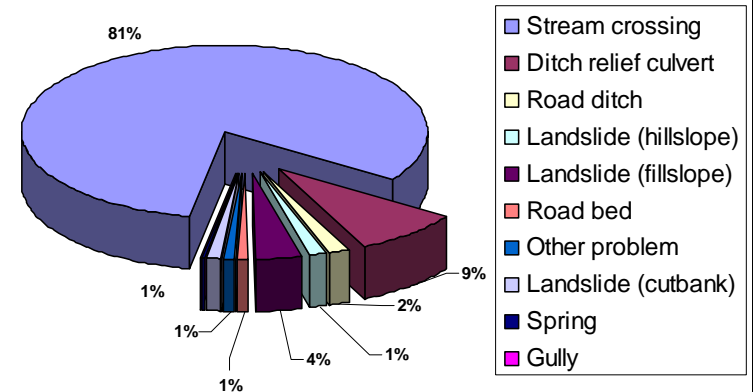
DIRT Inventories & Prioritization Workshops & Training Tools

County Road Direct Inventory of Roads and Treatments (DIRT)

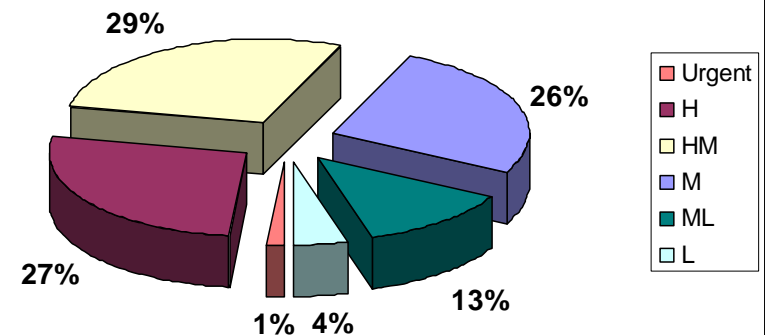
Sediment Source Inventory

	Volume Yd ³	Sites
Stream crossing	2,958,981	6299
Ditch relief culvert	315,775	2454
Road ditch	61,378	381
Landslide (hillslope)	44,385	24
Landslide (fillslope)	134,563	76
Road bed	31,593	217
Other problem	33,282	89
Landslide (cutbank)	36,490	32
Spring	7,249	80
Gully	2,511	9
Total	3,626,205	9,661

DIRT Sites by Type, Percent of Total Volume

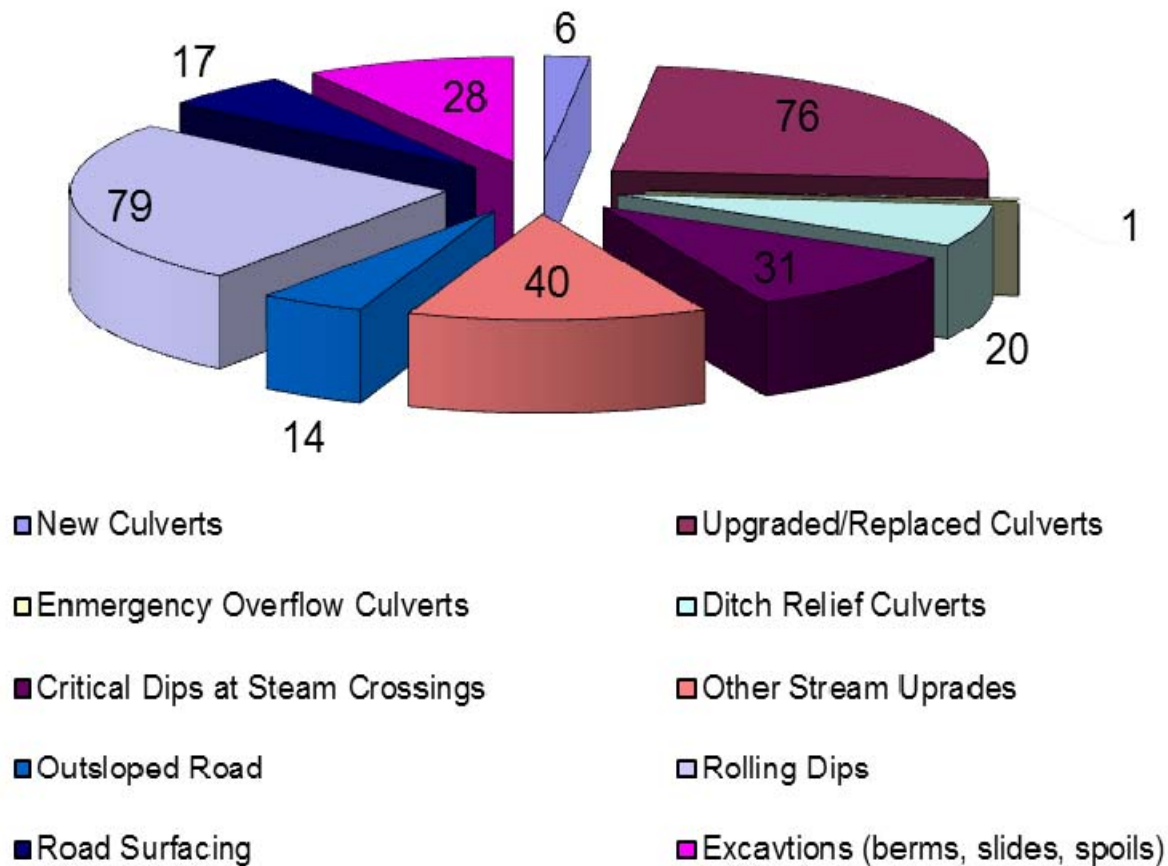


DIRT Sites by Immediacy, Percent of Total Volume



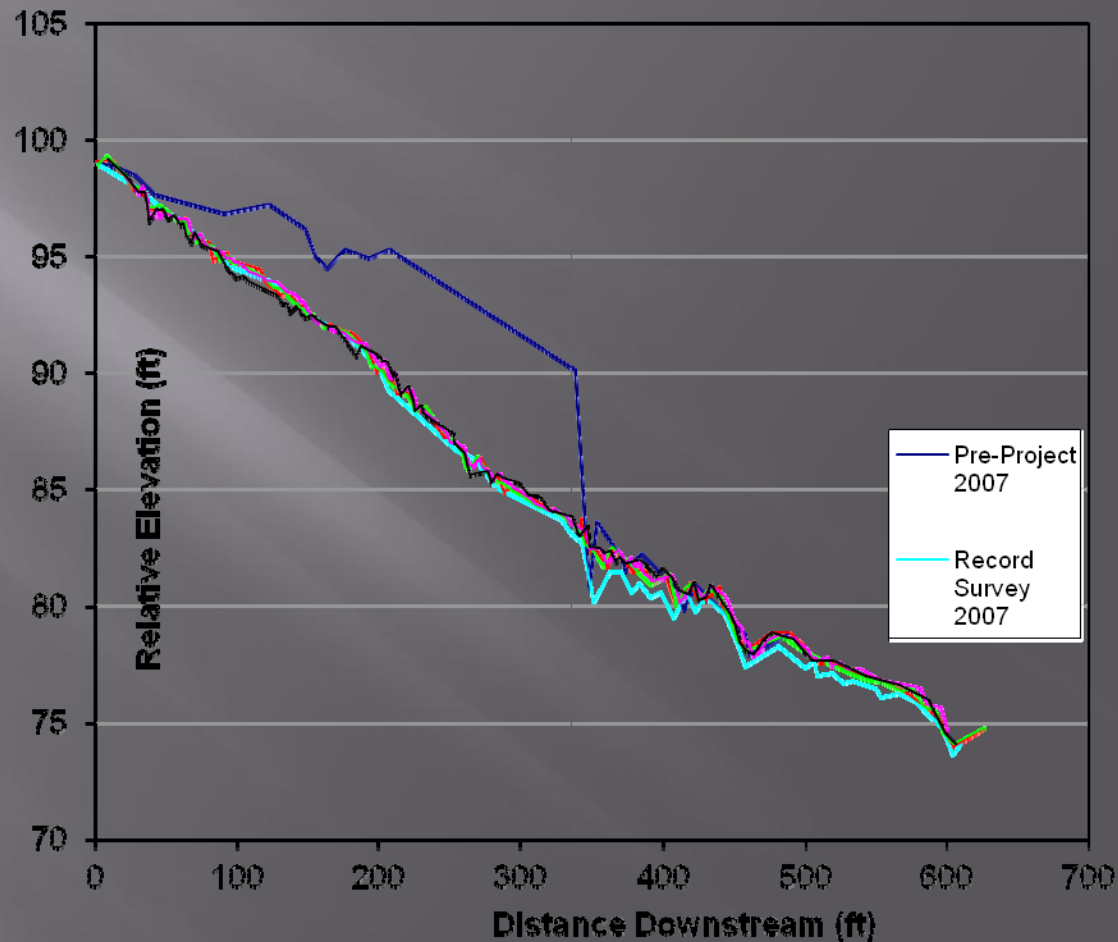
County Road Sediment Treatments

Figure 2. 2008-2010 Road Drainage Treatments 5C Counties



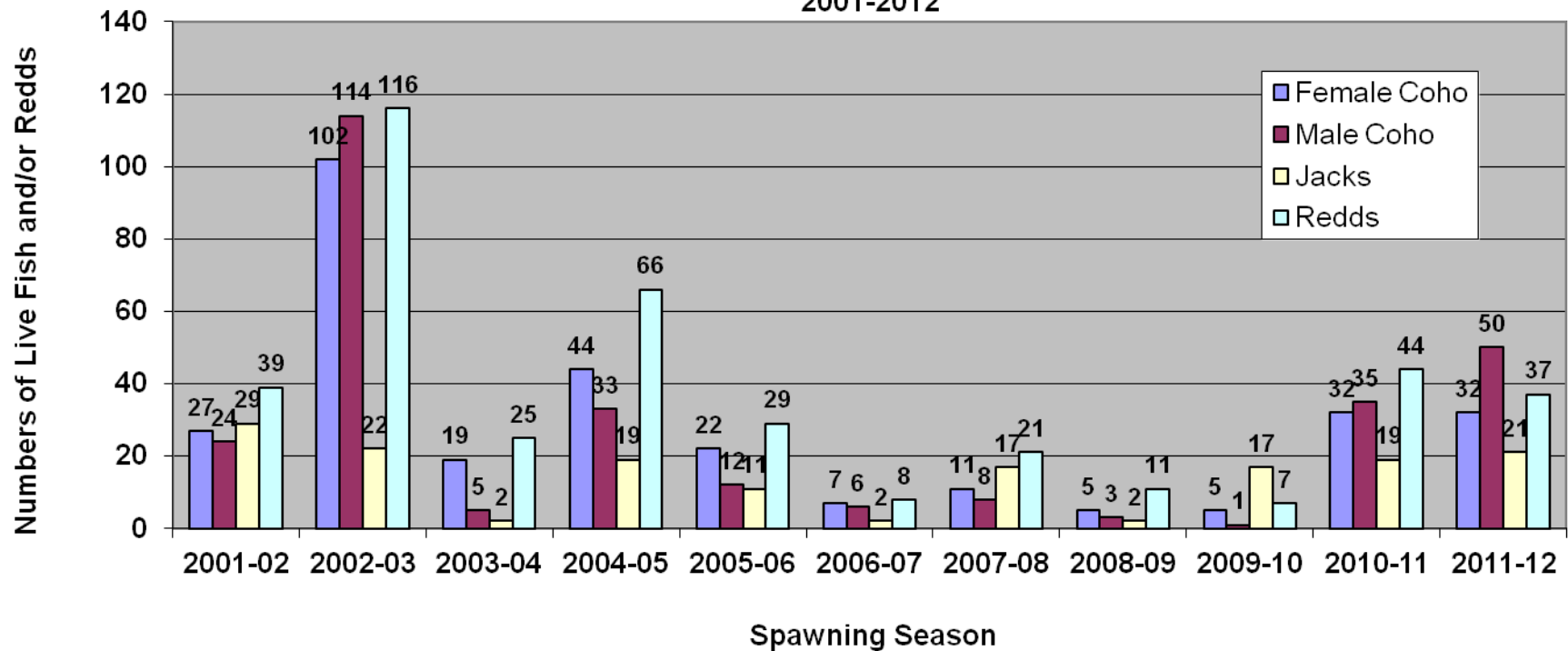
MONITORING

- ▣ Little Browns Creek Channel Adjustments
- ▣ Little Browns Creek Spawning Surveys & Fish Presence
- ▣ Morrison Gulch Spawning Surveys
- ▣ Ryan Creek Channel Adjustments
- ▣ Ryan Creek Spawning Surveys
- ▣ Conner Creek Channel Adjustments
- ▣ Conner Creek Fish Presence
- ▣ West Weaver Large Wood



MONITORING

Figure 2. Morrison Gulch - Post-project Spawning Survey Summaries, Fish by Sex and Age, 2001-2012

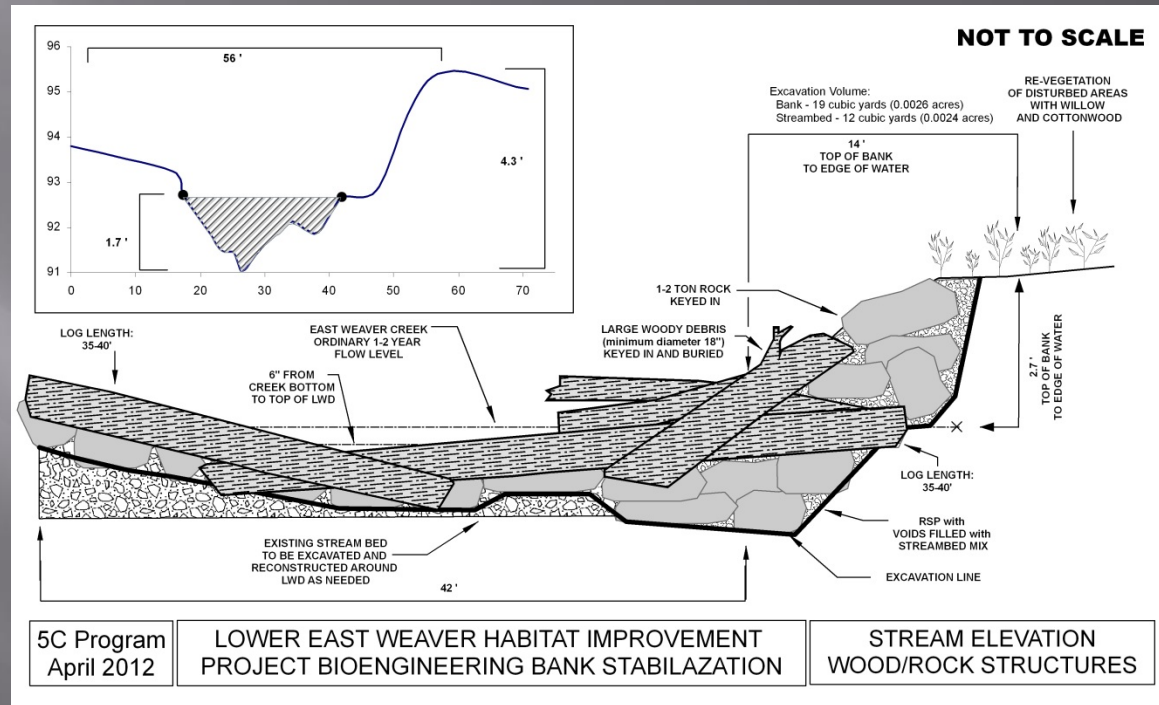


MONITORING

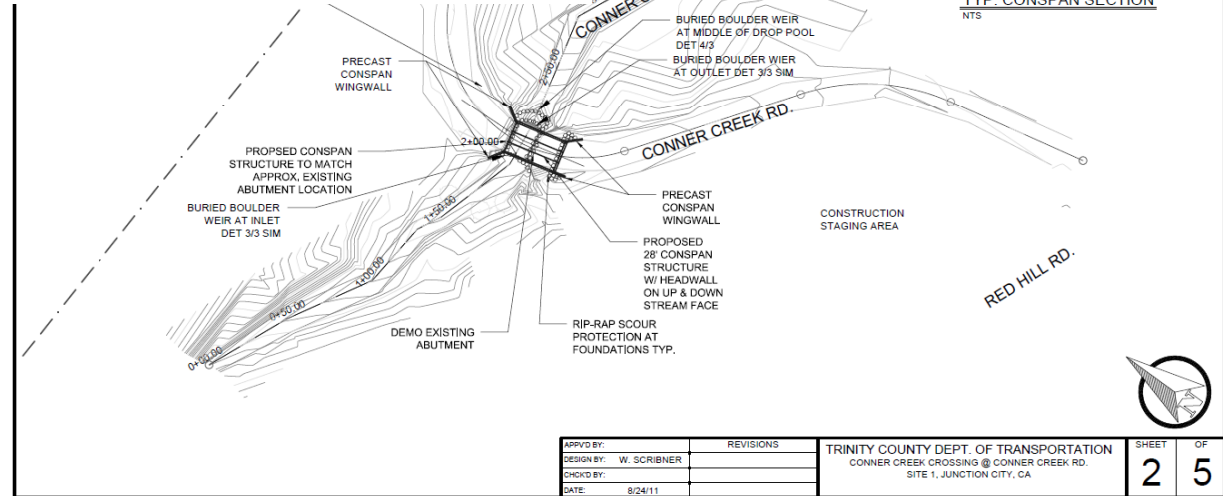
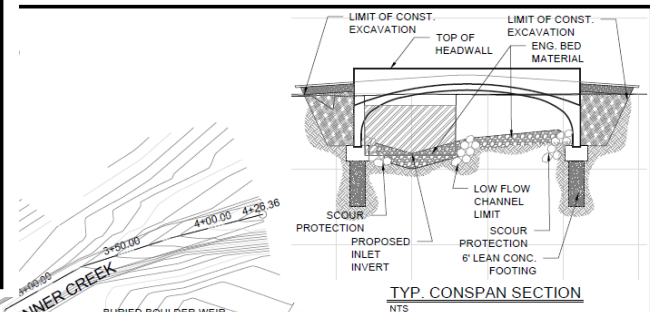
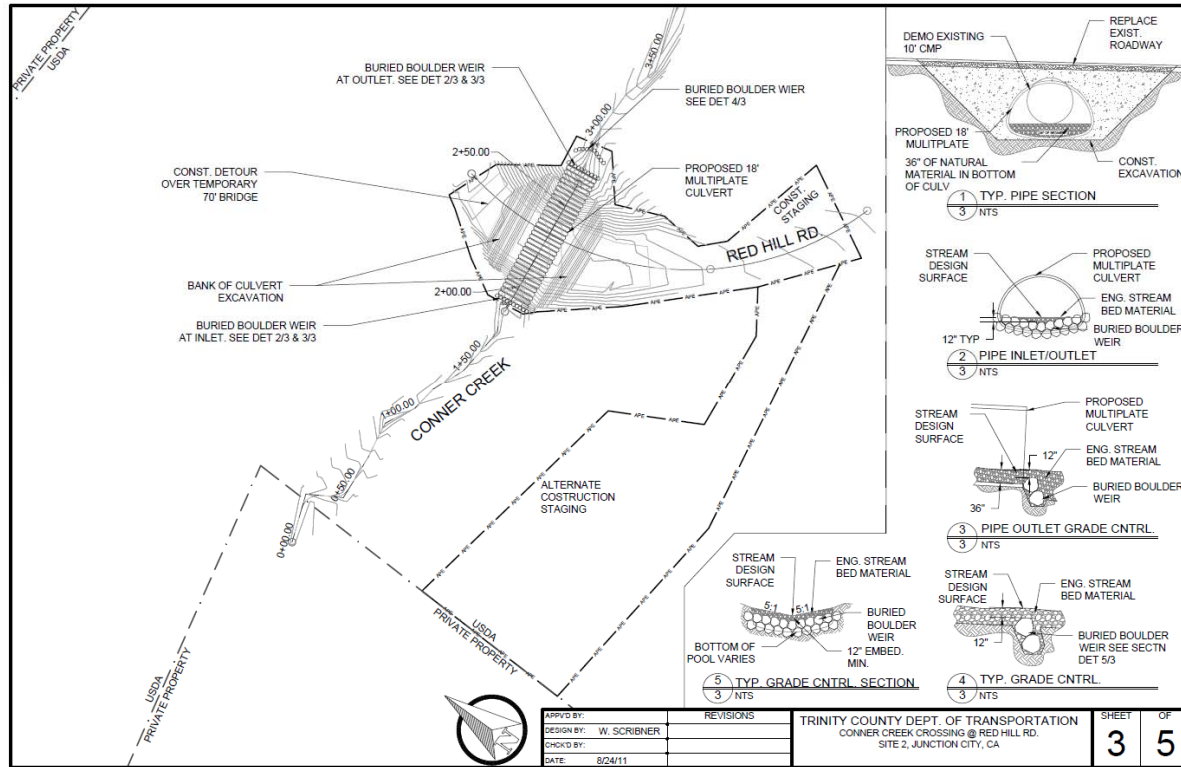


PROJECT DESIGN

- Conner Creek Barrier
- Lower East Weaver Habitat
- Sidney Gulch Channel/Floodplain Habitat Reconstruction
- McKinney Creek Barrier
- Francis Creek Barrier
- Telegraph Creek Barrier
- Dinner Creek Survey and Partial Design
- Bally Loop Barrier Partial Design



PROJECT DESIGN



ENVIRONMENTAL & PERMITTING

- Conner Barrier Categorical Exclusion and Decision Memo
- Fish Rock Drainage Mitigated Negative Declaration
- Lower East Weaver Habitat Environmental Assessment and FONSI
- Summit Creek Low Water Categorical Exclusion and Decision Memo
- Del Norte Roads Environmental Assessment initiated
- Sidney Gulch Channel/Floodplain Habitat Reconstruction Specialty Reports initiated
- Patricks, French Hill, Low Divide, Major Moore, & Griffin Creek Specialty Reports initiated
- Bally Loop Barrier Specialty Reports initiated



GRANT DEVELOPMENT

- ▣ NOAA American Rivers
- ▣ CDF&G FRGP
- ▣ Water Board (SEP)
- ▣ USFS RAC
- ▣ BoR TRRP
- ▣ USFWS
- ▣ NCIRWMP Prop 50 Revision
- ▣ Counties In-Kind

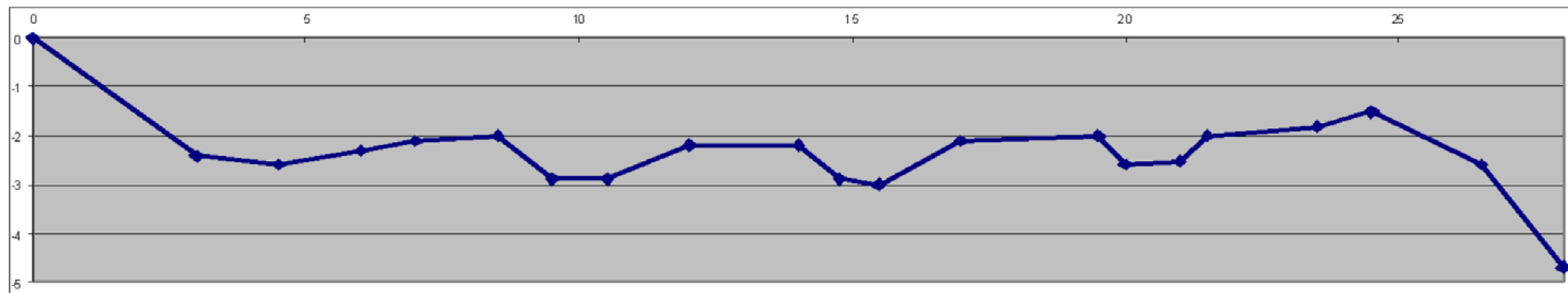
ADVOCACY/EXPERTISE

- ▣ CA Coho Recovery Team
- ▣ CA Board of Forestry Section V Technical Advisory Committee
- ▣ Fish Passage Forum (FPF)
- ▣ FPF Engineering, Public Outreach & Education Sub-Committees
- ▣ North Coast Integrated Regional Water Management Plan
- ▣ Trinity River Watershed Council
- ▣ *Trinity River Watershed Working Group*
- ▣ Testifying about Marijuana Impacts on Water Quality and Fisheries
- ▣ Federal Coho Recovery Plan
- ▣ Regional Water General Discharge Waiver & Certification for Road Maintenance

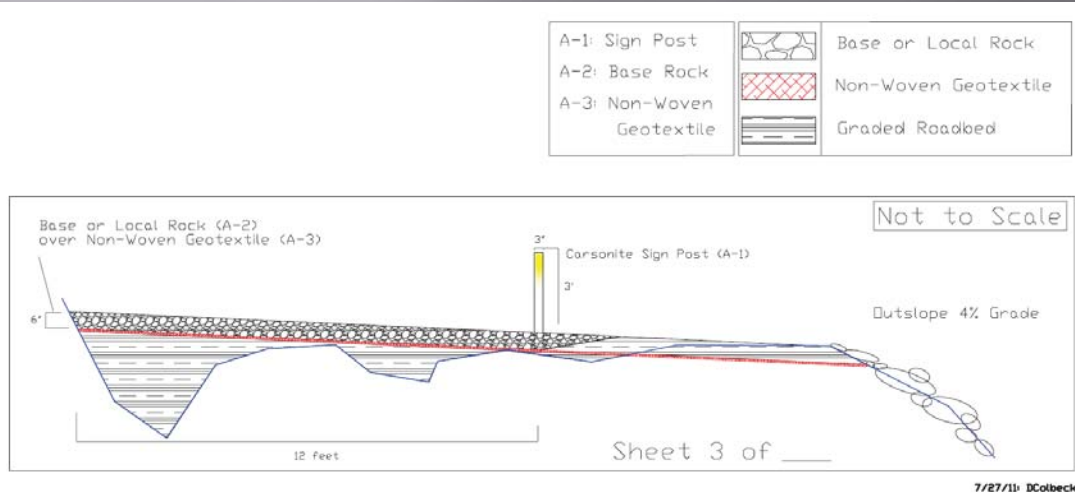
2011-2012 RESTORATION PROJECTS

- ▣ Browns Private Road Inventory
- ▣ Fish Rock Road Drainage Upgrades
- ▣ Usal Road Drainage Improvement
- ▣ Showers Pass Road Drainage Improvement
- ▣ China Gulch Final Drainage Improvement
- ▣ Ryan Creek County Barrier Removal
- ▣ Ryan Private Large Wood Placement
- ▣ Conner Creek at Conner Creek Barrier Removal
- ▣ Conner Creek at Red Hill Barrier Removal
- ▣ West Weaver Wood Passage
- ▣ Others

USAL ROAD



USAL ROAD AT WATERFALL GULCH



Fill the In Board Ditch, Outslope the Road, Remove the Berm, Breach the Berm, Add Geo Fabric & Rock Surface



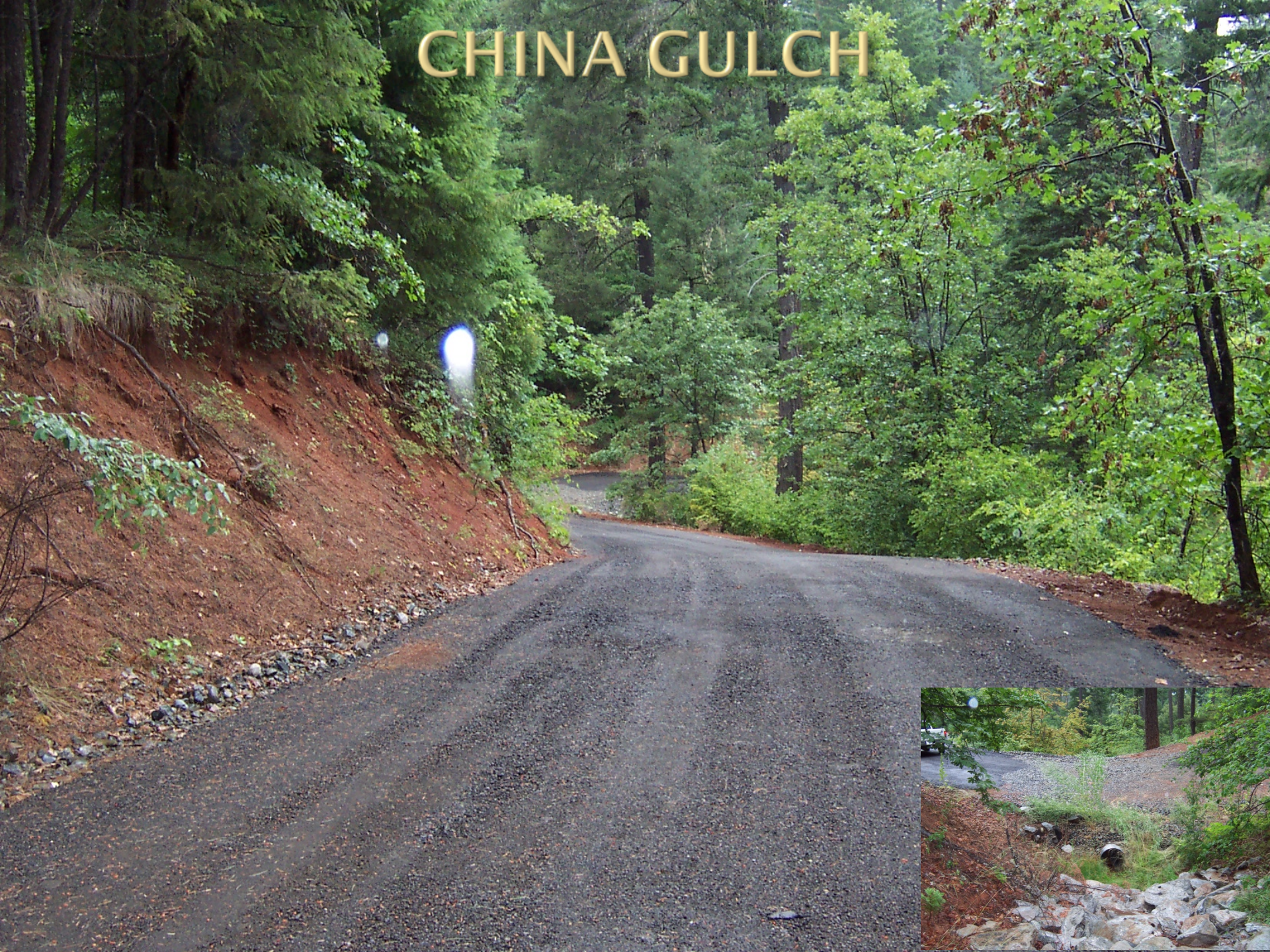
RYAN CREEK



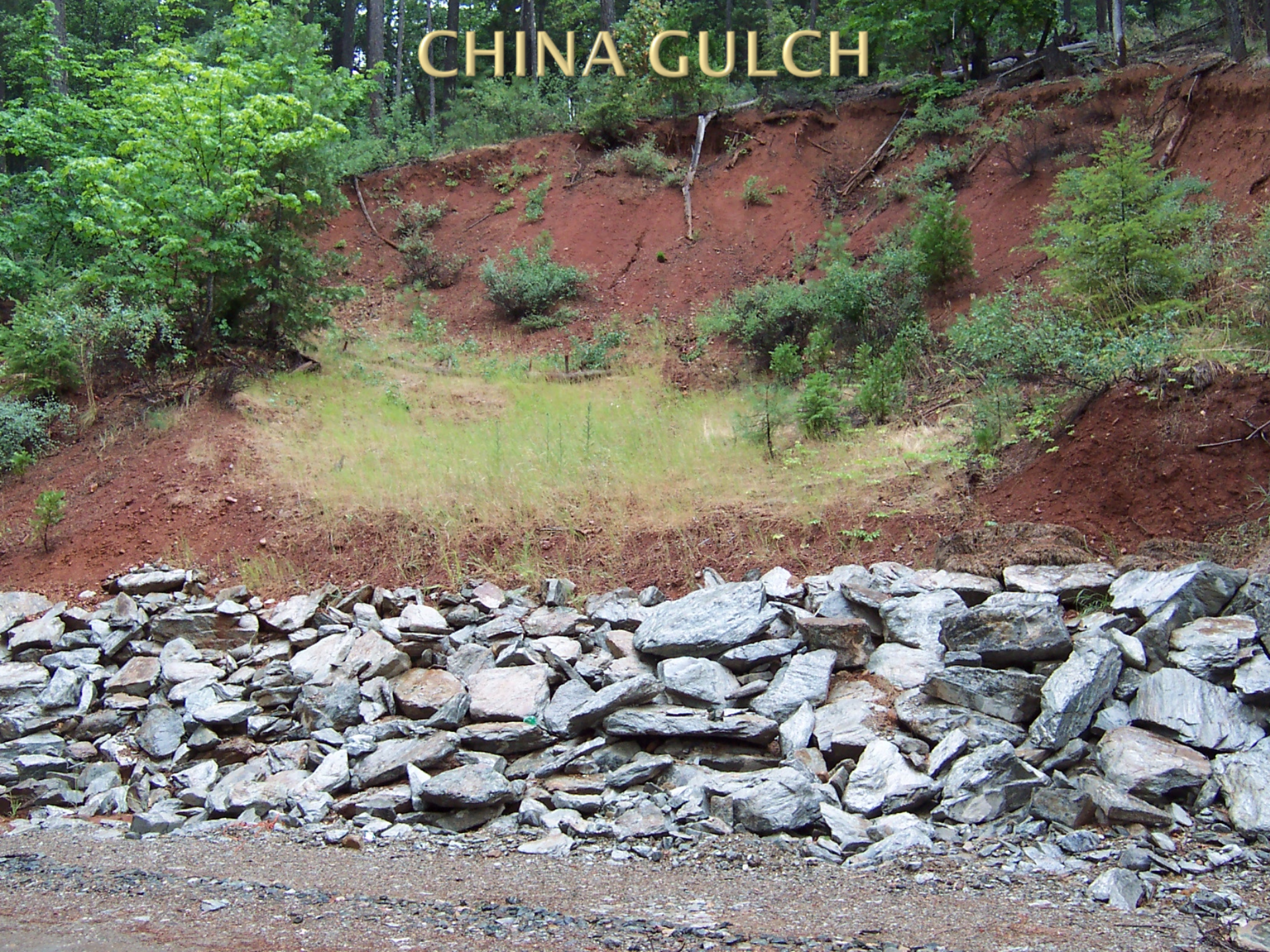
CONNER CREEK



CHINA GULCH



CHINA GULCH



TRAINING AND EDUCATION

- 
- A photograph of three people in a forest setting. On the left, a woman in a light green shirt and cap is gesturing while talking to two men. The man in the center has grey hair and a mustache, wearing a blue t-shirt. The man on the right is older, with a white beard, wearing a dark blue t-shirt and a tan cap. They are standing in front of a dense forest of tall evergreen trees. The text of the list is overlaid on the lower half of the image.
- Counties Roads Workshops
 - Society of American Forester's Roads Webinar
 - Salmonid Restoration Federation Coho Confab
 - Landowner Roads Trainings
 - Testifying about Marijuana Impacts on Water Quality and Fisheries