

10 Mile Road Sediment Reduction Project – Mendocino County Photolog

Located in the Garcia River Watershed, this sediment reduction project helped to prevent the delivery of over 4,000 cubic yards of sediment to a stream.

Picture Point 1 BEFORE Aug 12, 2002
Mileage: 22.97 to 23.0
Looking North 45° East
Through cut road with no drainage
relief subject to severe rutting
during winter by concentration of
water constrained by road berms



Picture Point 1 AFTER Sep 27, 2002
Mileage: 22.97 to 23.0
Looking North 45° East
After Applying 3" rock and
Sloping @ 4% into rock armored bank
to relief knockout around corner (not seen)



Picture Point 1 BEFORE Aug 12, 2002
Mileage: 22.92 to 23.0
Looking South 15° West
Through cut road with no drainage
relief subject to severe rutting
during winter by concentration of
water contained by road berm



Picture Point 1 AFTER Sep 27, 2002
Mileage: 22.92 to 23.0
Looking South 15° West
After providing knock out relief and
Outsloping @ 4%
Applying 8" rock



Picture Point 2 BEFORE Aug 12, 2002
Mileage: 22.85 to 22.92
Looking South 15° West
Through cut road with no drainage
relief subject to severe rutting
during winter by concentration of
water .



Picture Point 2 AFTER Sep 27, 2002
Mileage: 22.85 to 22.92
Looking South 15° West
After Applying 8" rock and
Sloping @ 4% into rock armored bank
to relief knockout around corner (see arrow)



Picture Point 4 BEFORE Aug 12, 2002
Mileage: 22.61 to 22.7
Looking South 60° West
Through cut road with no drainage
relief, subject to severe rutting
during winter by concentration of
water contained by road configuration.



Picture Point 4 AFTER Sep 27, 2002
Mileage: 22.61 to 22.7
Looking South 60° West
After Applying 8" rock and
Sloping @ 4% into rock armored bank
to relief knockout around corner (see arrow).



Picture Point 4 BEFORE Aug 12, 2002
Mileage: 22.61 to 22.7
Looking North 20° East
Flat road with no drainage
relief subject to severe rutting
during winter by concentration of
water contained by road configuration.



Picture Point 4 AFTER Sep 27, 2002
Mileage: 22.61 to 22.7
Looking North 20° East
After outsloping @ 4%
and applying 8" rock



Picture Point 6 BEFORE
Looking South 30° West
Through cut road with no drainage
relief subject to severe rutting
during winter by concentration of
water contained by road berms



Picture Point 6 AFTER
Looking South 30° West
After Applying 8" rock and out
sloping @ 4%.



Picture Point 7 BEFORE Aug 12, 2002
Mileage: 22.45 to 22.49
Looking South 70° West
Through cut road with no drainage
relief subject to severe rutting
during winter by concentration of
water contained by road berms



Picture Point 7 AFTER Sep 27, 2002
Mileage: 22.45 to 22.49
Looking South 70° West
After Applying 8" rock and
Sloping @ 4% into rock armored bank
to relief knockout around corner (not seen)



Picture Point 7 BEFORE Aug 12, 2002
Mileage: 22.45 to 22.49
Looking East
Flat road with no drainage
relief subject to severe rutting
during winter by concentration of
water contained by road configuration.



Picture Point 7 AFTER Sep 27, 2002
Mileage: 22.45 to 22.49
Looking East
After outslowing @ 4%
and applying 8" rock



Picture Point 8 BEFORE
Looking North 40° West
Inboard ditch road with no drainage
relief for 1000 feet subject to severe
rutting during winter by concentration of
water contained by road berm.



Picture Point 8 AFTER
Looking North 40° West
After reconfiguring road by
Outsloping @ 4%
Applying 3" rock. Rolling dip
installed at arrow.



Picture Point 15 BEFORE Aug 12, 2002
Mileage: 21.92 to 21.95
Looking North 75° East
Flat road with no drainage
relief subject to severe rutting
during winter by concentration of
water contained by road configuration.



Picture Point 15 AFTER Sep 27, 2002
Mileage: 21.92 to 21.95
Looking North 75° East
After outsloping @ 4%
and applying 8" rock



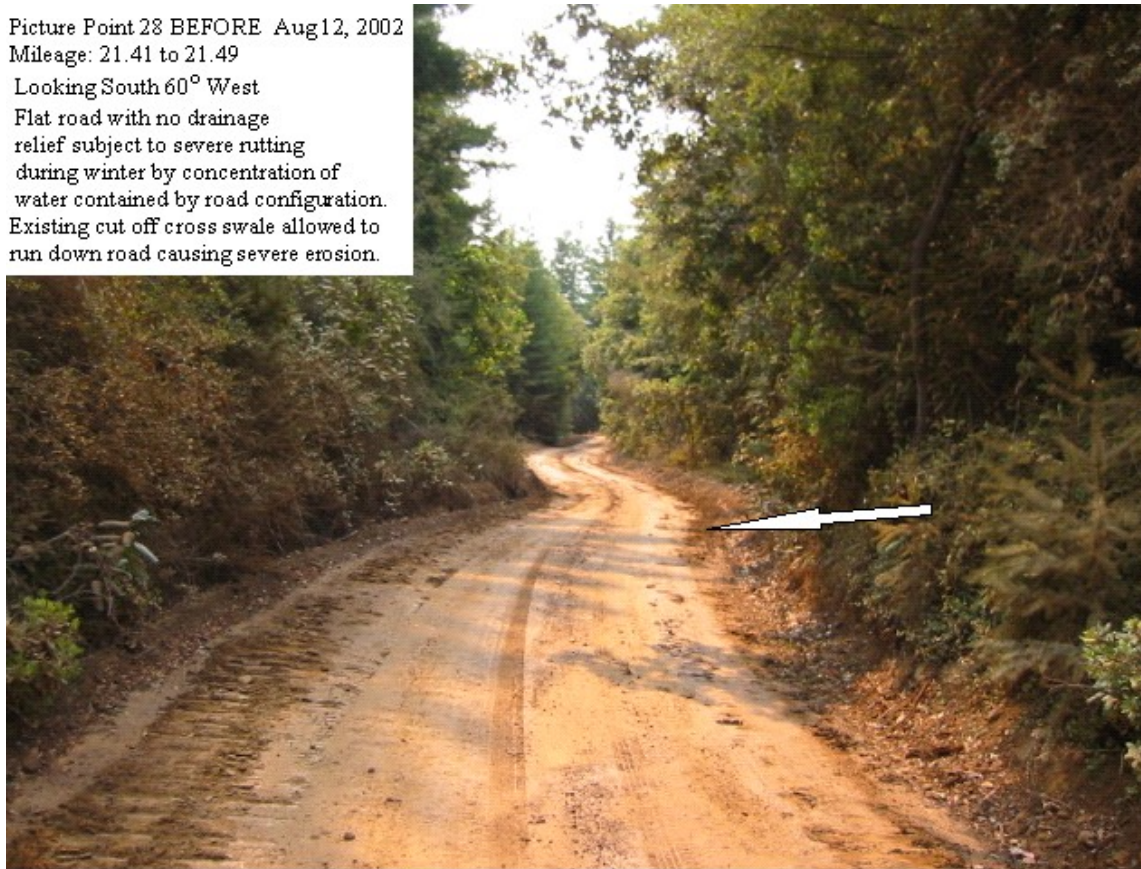
Picture Point 17 BEFORE Aug12, 2002
Mileage: 21.8 to 21.9
Looking South 20° West
Flat road with no drainage
relief subject to severe rutting
during winter by concentration of
water contained by road configuration.



Picture Point 17 AFTER Sep 27, 2002
Mileage: 21.8 to 21.9
Looking South 20° West
After outsloping @ 4%
and applying 3" rock



Picture Point 28 BEFORE Aug 12, 2002
Mileage: 21.41 to 21.49
Looking South 60° West
Flat road with no drainage
relief subject to severe rutting
during winter by concentration of
water contained by road configuration.
Existing cut off cross swale allowed to
run down road causing severe erosion.



Picture Point 28 AFTER Sep 27, 2002
Mileage: 21.41 to 21.49
Looking South 60° West
After outslowing @ 4%
and applying 8" rock
Convey cross swale through rolling dip
shown at arrow.



Picture Point 31 BEFORE Aug 12, 2002
Mileage: 21.32 to 21.35
Looking South 20° West
Flat road with no drainage
relief subject to severe rutting
during winter by concentration of
water contained by road berm.



Picture Point 31 AFTER Sep 27, 2002
Mileage: 21.32 to 21.35
Looking South 20° West
After outsloping @ 4%
and applying 8" rock



Picture Point 34 BEFORE Aug12, 2002
Mileage: 21.1 to 21.11
Looking South 20° West
Flat road with no drainage
relief subject to severe rutting
during winter by concentration of
water contained by road configuration.



Picture Point 34 AFTER Sep 27, 2002
Mileage: 21.1 to 21.11
Looking South 20° West
After outsloping @ 4%
and applying 8" rock

